

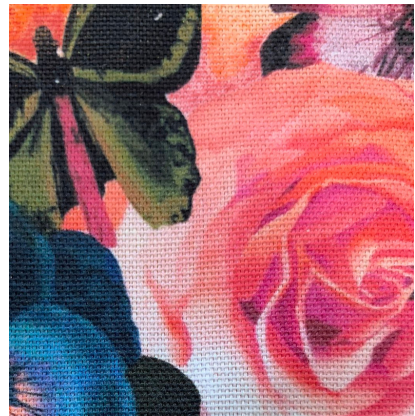
A Level Art

Course Details and Assessment

Fine Art is the broadest of all the individual specialisms and covers a wide variety of media and techniques. These include traditional drawing, painting and printmaking, photography and digital imagery, textile design and the combined study of Art & Art History (Critical and Contextual studies). You will have the opportunity at A level to develop these interests further. Students are encouraged to explore media to the full in order to best express their ideas.

Art lessons tend to focus on the development of skills through experimental work and research of work. This is based on an initial coursework project designed to aid the transition of skills from GCSE to A Level. In year 13 you will work on a project that has been agreed in conjunction with the Art Department. This personal project should allow you to work to your strengths and allow you to showcase your work.

We also have our own Pinterest account DeyesHighArt which is managed by the Learning Manager for Art. A wide variety of visual imagery is collated into groups by topic for students to use as stimulation for completing their own work. You can also follow the department on Instagram @DeyesArt and Twitter @DeyesArt where we celebrate and share students work as well as uploading YouTube clips from the Art Departments Youtube channel and exemplar work to stimulate your artwork.



How is the course assessed?

Year One

In term one, we focus on experimenting with techniques and developing skills.

**Terminal Exam (10 hours)
100% AS**

Candidates select one starting point from an early release question paper
6 weeks preparation time and a 10-hour examination in June

Grading - A* - E

Year Two

**Unit 3 – Fine Art – Personal Investigation
Unit 1 (60% A level)**

Candidates submit one major art project that has a personal significance and a related personal study between 1000 – 3000 words

Grading - A* - E

**Unit 4 – Fine Art – Controlled Assignment
(40% A level)**

Candidates select one starting point from an early release question paper. 6 weeks preparation time and a 15-hour examination in June

Grading - A* - E

"A Level Art allows you to develop creatively as an individual using both practical and thinking skills."

A Level Art



Where can A Level Art lead me?

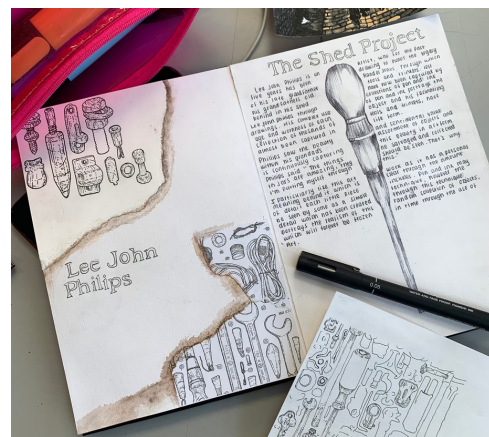
Many students go on to study the Art Foundation National Diploma and then access Higher Education. There are many universities offering courses relating to Art including: Fashion and Textile Design, Merchandising and Fashion Promotion courses as well as traditional routes such as Printmaking, Painting, Sculpture and Drawing.

Possible careers include...

**Architecture - Textile Design - International Fashion - Marketing
Interior Design - Illustration - Graphic Design**

What key skills do I need?

- Passion for the subject
- Strong work ethic
- Good time management
- Essay writing is key – so this must be a strength



Entry Requirements

- To be able to study A Level Art, you must achieve:
- At least a GRADE 5 in GCSE Art
 - At least a GRADE 5 in GCSE English

Exam Board

OCR

Still got questions?



Speak to Mrs Ridway for more information

L.Ridway@deyeshigh.co.uk