

A Level Biology

Course Details and Assessment

We follow the AQA 7401, 7402 specifications. Biology is an extremely popular choice at Deyes especially by students who have followed the Triple GCSE pathway. We are a successful subject that sees many students go on to pursue Biology in some way at undergraduate level. Biology is also a rigorous, academic, facilitating subject so is attractive when offered as part of a university application. We believe that Biology is fundamentally an experimental subject. These specifications provide numerous opportunities to use practical experiences to link theory to reality and equip students with the essential practical skills they need.

There will be on-going assessments throughout the two years, either as end of topic tests or pre-public examinations. Decisions on entry for AS level will be made in January of Year 12, though currently it is our intention that students who begin the course proceed through to the A2 exams at the end of Year 13.

In year one you will study Biological Molecules, Cells, how Organisms exchange substances with their environment, and Genetic Diversity and Relationships between Organisms.

In year two you will study:- Energy Transfers in and between Organisms; How Organisms respond to changes in their internal and external environments; Genetics; Populations; Evolution and Ecosystems and the Control of Gene Expression.



How is the course assessed?

Year One

All students will sit a mock exam in the summer term of year 12

Year Two

**Paper 1 (91 marks) - 120 minutes
(35 % of A Level)**

Any content from Year One including practical skills
76 marks - long and short answer questions
15 marks - extended response questions

**Paper 2 (91 marks) - 120 minutes
(35 % of A Level)**

Any content from topic Year Two including practical skills
76 marks - long and short answer questions
15 marks - extended response questions

**Paper 3 (78 marks) - 120 minutes
(30 % of A level)**

Any content from topic 1-8 including practical skills
38 marks - structured questions
15 marks - critical analysis
25 marks essay from a choice of two

"A Level biology has been really interesting. I have been able to develop my knowledge in so many new and exciting areas."

A Level Biology

Where can A Level Biology lead me?

Biology is a facilitating subject so desirable for all degree applications. It is a compulsory choice for any aspiring Doctors, Vets or Physiotherapists. There are lots of non-medical degree level entry careers within the NHS that Biology is a stepping stone towards such as Pharmacists, Microbiologists, Cell Biologists and Geneticists.

Possible careers include...

Doctor - Vet - Dentist - Physiotherapist
Pharmacists - Microbiologists - Cell Biologist - Teacher

What skills do I need?

The specification addresses the assessment objectives listed below but equips the student with several transferable skills. Successful A-Level Biologists are able to cope with high level terminology. The ability to communicate accurately is developed. There is an increased focus on numeracy and Biologists are especially skilled in the interpretation of complex data and the use of descriptive statistics.

- A01: Demonstrate knowledge and understanding of scientific ideas, processes, techniques and procedures.
- A02: Apply knowledge and understanding of scientific ideas, processes, techniques and procedures: in a theoretical context and in a practical context when handling qualitative data when handling quantitative data.
- A03: Analyse, interpret and evaluate scientific information, ideas and evidence, including in relation to issues, to make judgements and reach conclusions develop and refine practical design and procedures.

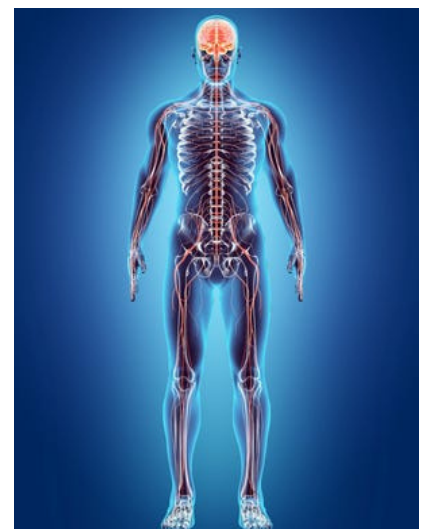
Entry Requirements

To be able to study A Level Biology, you must achieve:

- Grade 6 in Biology GCSE in all examined units OR
- Grade 6 in Trilogy Science (including Grade 6 on the Biology paper)
- Grade 6 in Maths and English.

Exam Board

AQA



Still got questions?



Speak to Mrs Matthews for more information

J.Matthews@deyeshigh.co.uk