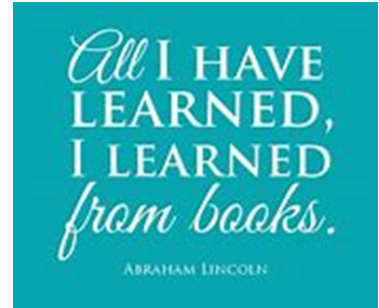


# A Level English Literature



## Course Details and Assessment

You need to love reading! If, at GCSE, you have enjoyed analysing texts, investigating characters and themes, forming opinions, and presenting and defending your interpretations maybe against those with completely different points of view then you will thrive on this course. You will study texts from the literary “cannon”: texts that have shaped our understanding of the world we live in today. Moreover, you will engage with some of the most loved and loathed characters from literary texts across a range of periods and genres: from the romantic Jay Gatsby to the loathsome Iago.



During your two-year course you will study a range of texts from different time periods.

### In year one you will study:

#### Paper 1: Love through the Ages

- Othello by Shakespeare
- Pre-1900 poetry anthology
- The Great Gatsby by F Scott Fitzgerald

#### Paper 2: Texts in Shared Contexts

Literature from 1945 to the present day

- The Handmaid's Tale by Margaret Atwood
- Feminine Gospels by Carol Ann Duffy
- A Streetcar Named Desire by Tennessee Williams

### In year two you will study:

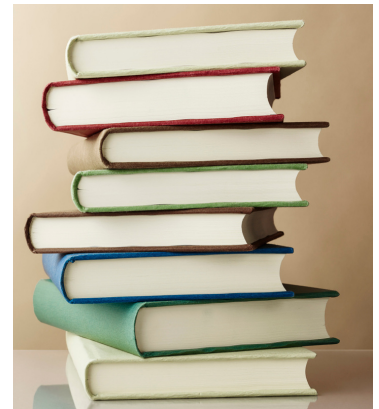
#### Independent Critical Study:

Texts in shared contexts (coursework 2500 words)

- Two pre-1900 core texts: Gothic literature
- At least two other texts independently, which feature aspects of Gothic literature (guided and supported by your teachers)

**Paper 1: unseen poetry analysis**

**Paper 2: unseen prose analysis**



## How is the course assessed?

### Year One

All students will sit a mock exam in the summer term of year 12

### Year Two

**Paper 1: Love through the Ages.**

3 hours - 40% (A2)

**Paper 2: Modern times: literature from 1945 - present day.**

2.5 hours - 40% (A2)

**Coursework: Texts across time. We will focus on the Gothic genre.**

20% A2.

**Grading - A\* - E**

*“I’ve loved the texts this year and I’ve liked the fact that your opinion changes about them so much when you look more deeply into how they’re written. I really care about some of the characters!”*

# A Level English Literature



## Where can an A Level in English Literature lead me?

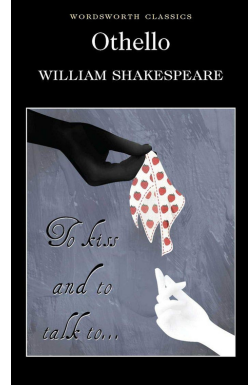
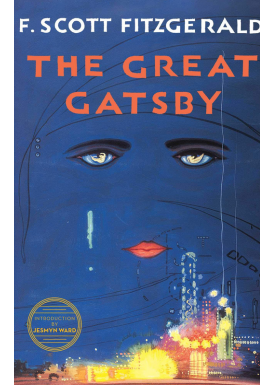
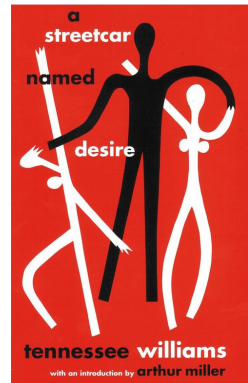
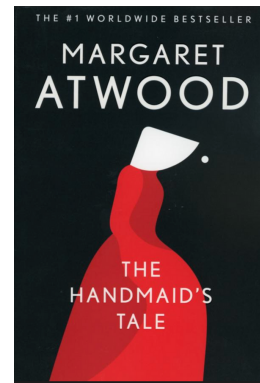
Studying English Literature at Advanced level teaches you how to analyse complex information with the help of sophisticated ideas and theories. That ability to read, reflect, and critique and then present your conclusions in a coherent and beautifully expressed argument is essential to many kinds of work, as is the ability to construct and defend an argument. Some Advanced level subjects are more frequently required for entry to degree courses than others. English Literature is one of these 'facilitating subjects'; facilitating because choosing them at Advanced level leaves open a wide range of options for university study.

## Possible careers include...

**TV & Media - Film - Writer - Journalist - Lawyer - Teacher**

## What key skills do I need?

- Critical analysis of the written word.
- Fascination with the power of language to shape and create meaning, both explicit and implied.
- The ability to articulate your opinion to others, both verbally and on paper.
- The ability to construct a coherent and fluent argument using a high standard of English appropriate to literary study.



## Entry Requirements

To be able to study A Level English Literature, you must achieve:

- Grade 6 in English Language and Literature
- A passion for reading.

## Exam Board

AQA

**Still got questions?**



**Speak to Mrs Simpson for more information**

**M.Simpson@deyeshigh.co.uk**